



# FITTING INSTRUCTIONS

Part Numbers:           **3212420 - ARB BULL BAR NON-FLARED**  
                                  **3412480 - ARB WINCH BAR NON-FLARED\***  
                                  **3412418 - ARB WINCH BAR NON-FLARED (EXPORT ONLY)\***

*\* For Warn low mount winches up to 9.5 XP*

Suited to vehicle/s:   **TOYOTA LAND CRUISER 76/78 & 79 SERIES: 2007 ON (non-airbag)**  
                                  **TOYOTA LAND CRUISER 76/78 & 79 SERIES: 2009 ON (airbag)**

## **WARNING**

### **REGARDING VEHICLES EQUIPPED WITH SRS AIRBAG:**

When installed in accordance with these instructions, the front protection bar does not affect operation of the SRS airbag. The product is suitable for 2007 ON non-airbag vehicles and also 2009 ON airbag vehicles.

### **ALSO, NOTE THE FOLLOWING:**

- ◆ This product must be installed exactly as per these instructions using only the hardware supplied.
- ◆ In the event of damage to any bull bar components, contact your nearest authorised ARB stockist. Repairs or modifications to the impact absorption system must not be attempted.
- ◆ Do not use this product for any vehicle make or model, other than those specified by ARB.
- ◆ Do not remove labels from this bull bar.
- ◆ This product or its fixing must not be modified in any way.
- ◆ The installation of this product may require the use of specialized tools and/or techniques
- ◆ It is recommended that this product is only installed by trained personnel
- ◆ These instructions are correct as at the publication date. ARB Corporation Ltd. cannot be held responsible for the impact of any changes subsequently made by the vehicle manufacturer
- ◆ During installation, it is the duty of the installer to check correct operation/clearances of all components
- ◆ Work safely at all times
- ◆ Unless otherwise instructed, tighten fasteners to specified torque

## **ARB 4x4 ACCESSORIES**

### Corporate Head Office

42-44 Garden St  
Kilsyth, Victoria  
AUSTRALIA 3137

Tel:    +61 (3) 9761 6622  
Fax:    +61 (3) 9761 6807

Australian enquiries  
North & South American enquiries  
Other international enquiries

sales@arb.com.au  
sales@arbusa.com  
exports@arb.com.au

**[www.arb.com.au](http://www.arb.com.au)**

# GENERAL CARE AND MAINTENANCE

By choosing an ARB bar, you have bought a product that is one of the most sought after 4WD products in the world. Your bar is a properly engineered, reliable, quality accessory that represents excellent value. To keep your bar in original condition it is important to care and maintain it following these recommendations:

- Prior to exposure to the weather your bar should be treated to a Canuba based polish on all exposed surfaces. It is recommended that this is performed on a six monthly basis or following exposure to salt, mud, sand or other contaminants.
- As part of any Pre Trip Preparation, or on an annual basis, it is recommended that a thorough visual inspection of the bar is carried out, making sure that all bolts and other components are tightened to the correct specification. Also check that all wiring sheaths, connectors, and fittings are free of damage. Replace any components as necessary. This service can be performed by your local authorised ARB Stockist.

## FITTING REQUIREMENTS

### REQUIRED TOOLS FOR FITMENT OF THIS PRODUCT:

- BASIC TOOL KIT: SOCKETS, SPANNERS, PLIERS, SCREW DRIVERS
- DRILL AND 12mm DRILL BIT
- SHARP KNIFE OR HACKSAW BLADE (FOR TRIMMING FOG LIGHT SURROUND)
- TORQUE WRENCH

### TOW BAR FITMENT (Vehicles 09 ON):

- IF THE VEHICLE WILL BE FITTED WITH BOTH A BULL-BAR AND A TOWBAR, THE TOWBAR MUST BE WIRED USING A DEDICATED WIRING LOOM.
- THE ARB UNIVERSAL TOWBAR WIRING LOOM MUST BE USED TO WIRE THE TOWBAR (PART NUMBER A4916)

### HAVE AVAILABLE THESE SAFETY ITEMS WHEN FITTING PRODUCT:

Protective eyewear



Hearing protection



**NOTE: 'WARNING' notes in the fitting procedure relate to OHS situations, where to avoid a potentially hazardous situation it is suggested that protective safety gear be worn or a safe work procedure be employed. If these notes and warnings are not heeded, injury may result.**

### FASTENER TORQUE SETTINGS:

SIZE	Torque Nm	Torque lbft
M6	9Nm	7lbft
M8	22Nm	16lbft
M10	44Nm	32lbft
M12	77Nm	57lbft

<b>PARTS LISTING</b>			
<b>APPLICATION.</b>	<b>PART NO.</b>	<b>QTY</b>	<b>DESCRIPTION</b>
<b>ALL BULL BARS AND WINCH BARS</b>			
BULL BAR TO CHASSIS	6151249	2	BOLT M12 X 1.75 X 140 mm
	6151189	2	NUT M12 X 1.75
	4581049	4	WASHER FLAT M12
	4581050	2	WASHER SPRING M12
	6151686	8	BOLT M10 X 1.25 X 30 mm Grade 10.9
	4584366	8	WASHER FLAT M10 X 30 X 4
	4581011	4	SPACER M12 X 4 mm
	5848357	4	PACKER TOP/BOTTOM
	5848414	4	PACKER SIDE
	5848419	2	PACKER TOP/BOTTOM 4mm THICK
LICENSE PLATE TO BULL BAR	6151384	2	SCREW PAN HEAD 5 X 16mm BLACK
	6821189	2	GROMMET LICENCE PLATE
<b>NON-FLARED / NO-FOG BARS</b>			
INDICATOR FITMENT	3500080	1	UNIVERSAL INDICATOR KIT
	180302	4	CABLE TIES 200 X 4.8 mm
<b>FLARED / FOG BARS</b>			
INDICATOR / CLEARANCE LAMP LIGHT SURROUND SET	3163015	1	LIGHT SURROUND SET
	6821151L	1	INDICATOR
	6821151R	1	INDICATOR
	6821152	2	INDICATOR LOOM
	180701	6	SCOTCH LOCKS
	180302	6	CABLE TIES
<b>WINCH BARS ONLY</b>			
WINCH FITMENT	4581040	4	WASHER FLAT M10
	6151074	2	BOLT 3/8" X 1 3/4"
	4581041	4	WASHER FLAT 7/16" X 1"
	180302	4	CABLE TIES
CONTROL BOX FITMENT	3756499	1	CONTROL BOX BRACKET
	6151021	2	BOLT M8 X 20MM
	6151132	2	NUT FLANGE M8
	4581044	2	WASHER M8
LICENSE PLATE WHEN WINCH FITTED	EG 50	2	GROMMET 50MM
	3751451	1	NUMBER PLATE BRACKET
	6151017	4	BOLT M6 X 16
	6151046	4	WASHER FLAT M6
	6151128	4	NUT FLANGE M6
<b>STONE SHIELD AND RADIATOR GUARD – sold separately. kit 3512040</b>			
	6522675	1	STONE SHIELD
	3757506	1	RADIATOR GUARD
<b>TOW HOOK PACKERS, hooks sold separately- Part Nos 6125 or 6126</b>			
	5848376	2	PACKER TOW HOOK
<b>FOG LIGHT FITTINGS – sold separately (fog compatible bars only)</b>			
	6821201	1	FOG LAMP KIT
	MD02	1	LOOM KIT #
	180209S	1	SWITCH NO CAP #
	180215	1	SWITCH CAP FOG LIGHT SYMBOL #

# Required if the vehicle is not fitted with genuine fog light loom.

## FITTING PROCEDURE: VEHICLE PREPARATION



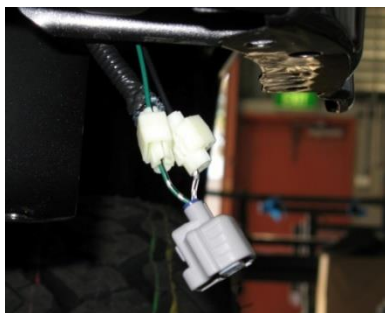
1. Remove grill
2. Remove bumper bar and steel support structure.
3. If fitting factory fog light to the bull bar, remove the wiring loom from the bumper bar.
4. Remove the bolt on tow hook/s. Retain the tow hook/s and bolts.
5. Remove the stone shield. Retain the stone shield and the retaining bolts.



6. Refit grill
7. When complete, the vehicle should be presented as shown.



8. Remove the vehicle's plastic indicator access covers (RH & LH), located underneath the indicators.



**NOTE: Step 9 applies to non-flared bull-bars that have indicators only.**

9. Connect the indicator harnesses to the vehicle using the wiring looms and scotch locks provided (see table for wire colours). Refit the plastic covers removed at step 8.

FUNCTION	INDICATOR HARNESS	VEHICLE COMBINATION LAMP	
		RIGHT	LEFT
INDICATOR	GREEN	GREEN / YELLOW	GREEN / BLACK
EARTH	BLACK	WHITE/BLACK	WHITE/BLACK

## VEHICLE PREPARATION (Continued)



**NOTE: Step 10 applies to bull-bars that take the Indicator / Clearance Lamp light surround sets only.**

10. Connect the indicator/clearance lamp looms to the vehicle using the wiring looms and scotch locks provided (see table for wire colours). Refit the plastic covers removed at step 8.

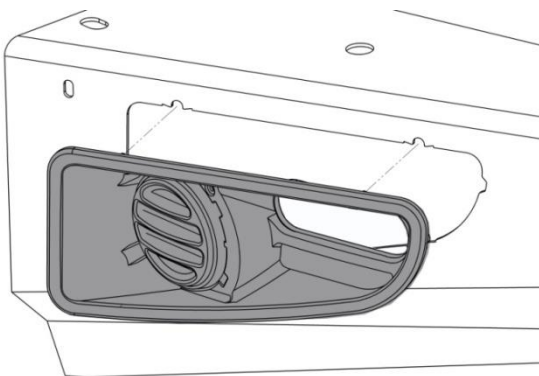
FUNCTION	INDICATOR HARNESS	VEHICLE COMBINATION LAMP	
		RIGHT	LEFT
INDICATOR	GREEN	GREEN / YELLOW	GREEN / BLACK
PARK	RED	GREEN	GREEN / RED
EARTH	BLACK	WHITE/BLACK	WHITE/BLACK

## BAR PREPARATION



**NOTE: Step 11 applies to non-flared bull-bars that have indicators only.**

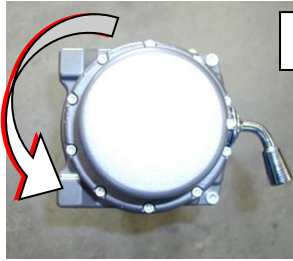
11. Fit indicators into the bull bar. Refer to supplementary instructions for indicator installation.



**NOTE: Step 12 applies to bull-bars that take the Indicator / Clearance Lamp light surround sets only.**

12. Assemble and install combination light surrounds (p/n 3163015) as per instructions no. 3786421 supplied with surround kit. Note: Optional fog lamps can be installed at this point as per fitting instruction no. 3783315 supplied with fog lamp kit no. 6821201. If fitting fog lights remove the fog light wiring loom from the vehicle bumper and refit this loom to the bull-bar with cable ties.

## BAR PREPARATION (Continued)



ORIGINAL



VIEWED FROM  
LHS OF VEHICLE

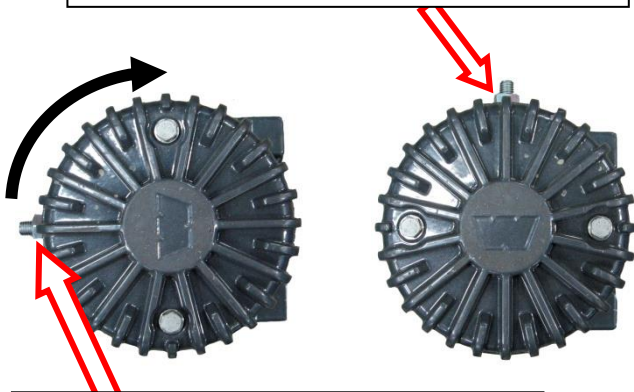
ROTATED

**If not fitting a winch, proceed to step 30.**

13. When viewed from the gearbox end, rotate the gearbox 77° (two hole spaces) in an anti-clockwise direction.
14. Remove the cap head screws retaining the gearbox to the winch drum. Carefully lift the gear box just enough to clear the dowel pin. Refit and tighten the cap screws.

**WARNING – Do not separate the gearbox more than 4mm from the housing.**

ROTATED TERMINAL POSITION



ORIGINAL TERMINAL

15. When viewed from the motor end, rotate the motor 90° in a clockwise direction.
16. Place the winch on its end and remove the two motor retaining bolts. Gently raise the motor just enough to clear the locating dowel and rotate it. Refit and tighten the bolts.

**WARNING – Do not separate the motor more than 4 mm from the housing.**



17. Using a 12 mm drill bit, drill two new holes in the roller fairlead 20 mm below the original holes

Drill the new hole 20mm below



18. Lay the winch on a suitable surface and place the bull bar on top so that the wire rope will feed from the bottom.
19. Attach the winch to the bull bar through the top two holes.

Use two 3/8" x 1 1/2" bolts, M10 flat washers and spring washers.



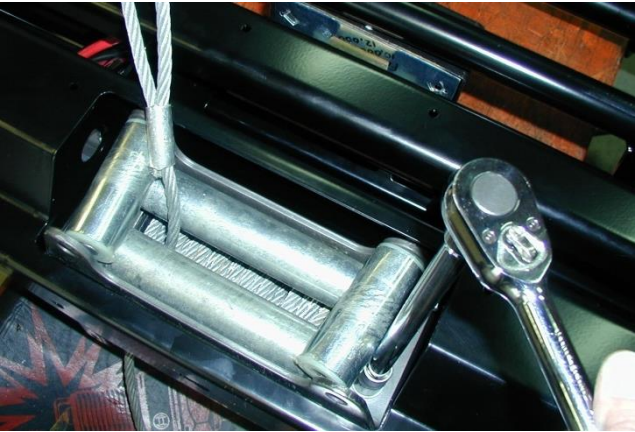
3/8" - 44 Nm.

**Note: The horizontal slots allow adjustment for winch clearance to chassis mount**


## BAR PREPARATION (Continued)



20. Remove the cir-clips from the bottom of the vertical rollers of the fairlead and push the pins upward.
21. With the pins free of the lower return of the fairlead bracket, push the vertical rollers inward.




22. Attach the fairlead to the bull bar using two 3/8" x 1 3/4" bolts, flat washers and spring washers.

 3/8" - 44 Nm.

23. Replace the cir-clips on the vertical rollers.




24. Fit two rubber grommets to holes in the top surface of the bull bar.
25. Attach control box to control box bracket.
26. Fit control box to bar with the two M8 x 20mm bolts, M8 flat washers and M8 flange nuts provided.

 M8 - 22 Nm.

27. Run cables through the rubber grommets and connect to the winch as per the wiring diagram supplied with the winch.
28. Using cable ties, fix the cables away from any moving, sharp or hot surfaces.



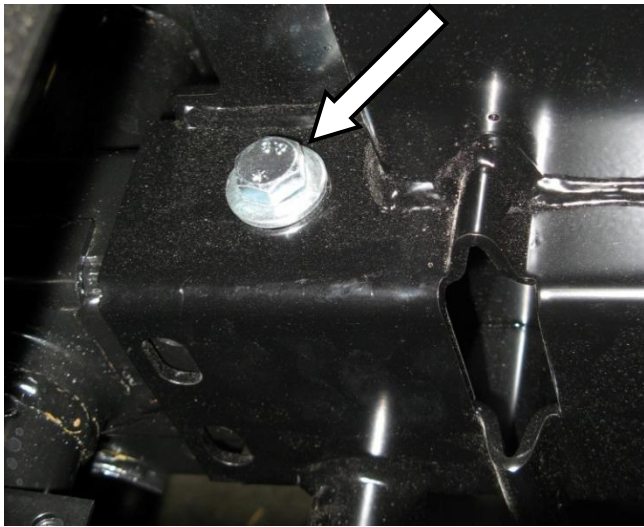
29. Fit license plate bracket to the winch bar using the M6 x 16 mm bolts, flat washer and flange nuts provided.

 M6 - 9 Nm.

## FITTING PROCEDURE




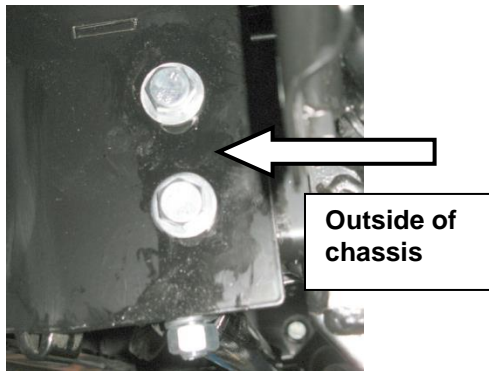
30. With the help of an assistant, lift the bull bar onto the chassis rails of the vehicle.



31. Align the mounting holes and fit the two M12 x 140mm bolts with M12 flat washers through the chassis from the top. Fix with M12 flat washers, spring washers and nuts.


**NOTE: Leave these bolts finger tight at this stage.**


 M12 - 77 Nm.



32. Fit six M10 x 30 mm bolts, M10 x 30 x 4 flat washers to the vehicle. Fit two on the outside of each chassis rail. Fit one to the upper hole on the inside of each chassis rail.

33. Align the bull bar to the vehicle making sure that both sides have even gaps to the front guards. Fit packers in gaps between chassis and bar mounting bracket. In some cases two packers on top of each other are required. Use the "U" shaped packers for top and bottom and the "M" shaped packer for the sides. When all packers are fitted, tighten the M12 and M10 bolts. When all bolts are tight break off packer extensions.

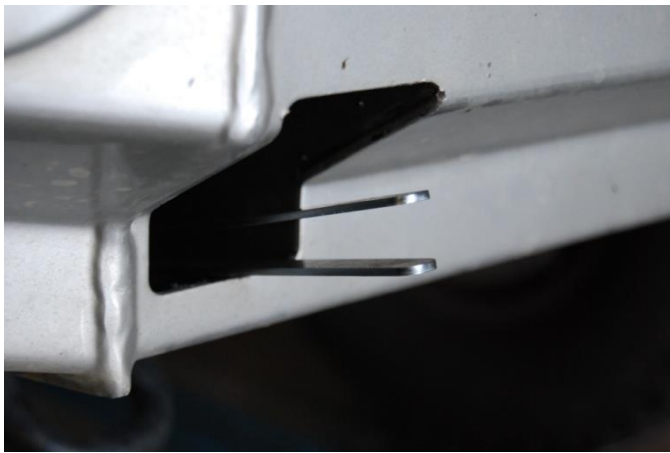
 M10 - 44 Nm.

 M12 - 77 Nm.

Refer to next 6 photos



## FITTING PROCEDURE



## FITTING PROCEDURE



34. Refit the tow hook/s to the vehicle using the original bolts removed in step 4. Fit tow hook spacers (i.e. two 4mm thick washers) between the tow hook/s and each chassis rail/s for the two lower bolts.

**NOTE: If not refitting the tow hooks to the vehicle fit one M10 x 30 mm bolt, flat washer and spring washer to the lower inside holes of each chassis rail.**



M10 – 44 Nm.

35. Refit the factory stone shield removed in step 5.



36. For winch bars, fit the license plate to the license plate bracket using the M6 bolts, flat washers and flanged nuts provided.
37. For non-winch bars, fit two plastic grommets into holes in the front of the bull bar. Attach the license plate to the bar by screwing self-tapping screws into these grommets.
38. Connect the indicators / clearance lamps to the looms fit during steps 9-10.
39. If fitting fog lights connect the bumper fog light loom, fit at step 12, to the main vehicle loom.

### Note:

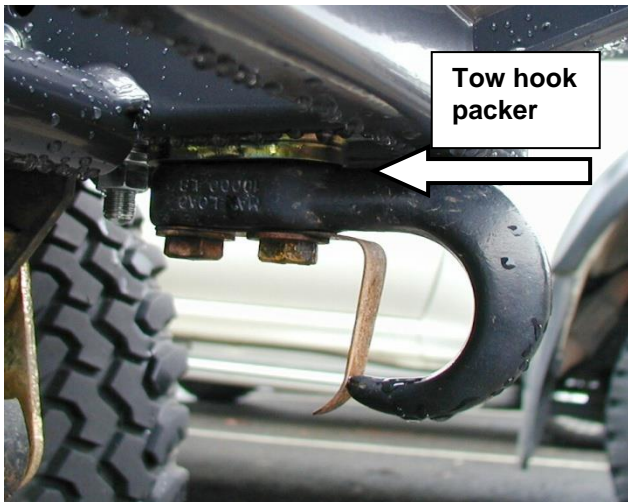
- ◆ **Secure all wiring and ensure it is not exposed to sharp edges or moving surfaces**
- ◆ **Check that all lights work correctly**
- ◆ **Check and test winch if fitted**

## OPTIONAL ACCESSORIES



### **RADIATOR GUARD AND STONE SHIELD**

The radiator guard and stone shield shown in the photo are available from ARB stores as accessories. The ARB kit number is 3512040.



### **TOW HOOKS**

Provisions have been made so that forged tow hooks (P/No 6125 or 6126 available from ARB stores) can be fit. If fitting these tow-hooks, place one tow hook packer between the bull bar and each hook.

## FIT PRODUCT

