



FITTING INSTRUCTIONS

Part Number: **3514100**

Product **HILUX 19W F/LIGHT BRACKET 2013ON**

Description:

WARNING

REGARDING VEHICLES EQUIPPED WITH SRS AIRBAG:

When installed in accordance with these instructions, the front protection bar does not affect operation of the SRS airbag.

ALSO, NOTE THE FOLLOWING:

- ◆ This product must be installed exactly as per these instructions using only the hardware supplied.
- ◆ In the event of damage to any bull bar component, contact your nearest authorised ARB stockist. Repairs or modifications to the impact absorption system must not be attempted.
- ◆ Do not use this product for any vehicle make or model, other than those specified by ARB.
- ◆ This product or its fixing must not be modified in any way.
- ◆ The installation of this product may require the use of specialized tools and/or techniques
- ◆ It is recommended that this product is only installed by trained personnel
- ◆ These instructions are correct as at the publication date. ARB Corporation Ltd. cannot be held responsible for the impact of any changes subsequently made by the vehicle manufacturer
- ◆ During installation, it is the duty of the installer to check correct operation/clearances of all components
- ◆ Work safely at all times
- ◆ Unless otherwise instructed, tighten fasteners to specified torque

ARB 4x4 ACCESSORIES

Corporate Head Office

42-44 Garden St
Kilsyth, Victoria
AUSTRALIA 3137

Tel: +61 (3) 9761 6622
Fax: +61 (3) 9761 6807

Australian enquiries
North & South American enquiries
Other international enquiries

sales@arb.com.au
sales@arbusa.com
exports@arb.com.au

www.arb.com.au

GENERAL CARE AND MAINTENANCE



By choosing an ARB accessory, you have bought a product that is one of the most sought after 4WD products in the world. Your accessory is a properly engineered, reliable, quality accessory that represents excellent value. To keep your accessory in original condition it is important to care and maintain it following these recommendations:

- Prior to exposure to the weather your accessory if powder coated should be treated to a Carnauba based polish on all exposed surfaces. It is recommended that this is performed on a six monthly basis or following exposure to salt, mud, sand or other contaminants.
- As part of any Pre Trip Preparation, or on an annual basis, it is recommended that a thorough visual inspection of the entire bull bar and accessories is carried out, making sure that all bolts and other components are torqued to the correct specification. Also check that all wiring sheaths, connectors, and fittings are free of damage. Replace any components as necessary. This service can be performed by your local authorized ARB Stockist.

REQUIRED TOOLS FOR FITMENT OF PRODUCT:

Basic tool kit	Power Drill, Dia 3 and 7mm drill bits
Pneumatic hacksaw	Scriber
Touch up paint	File

HAVE AVAILABLE THESE SAFETY ITEMS WHEN FITTING PRODUCT:

Protective eyewear		Hearing protection	
--------------------	---	--------------------	---

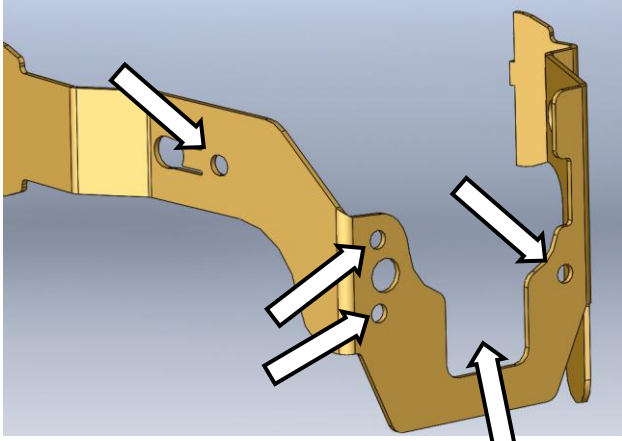
FASTENER TORQUE SETTINGS:

SIZE	Torque Nm	Torque lbft
M6	9Nm	7lbft
M8	22Nm	16lbft
M10	44Nm	32lbft
M12	77Nm	57lbft

PARTS LISTING

APPLICATION.	PART NO.	QTY	DESCRIPTION
INSTALL ADAPTOR BRACKET KIT FOR 19W FOG LAMP	3759275R	1	BRACKET ADAPTOR TO 19W FOG
	3759275L	1	BRACKET ADAPTOR TO 19W FOG
	6151402	6	HEX BOLT M6 x 16 BLACK
	6151128	6	FLANGE NUT M6
	4584295	6	FLAT WASHER M6 BLACK

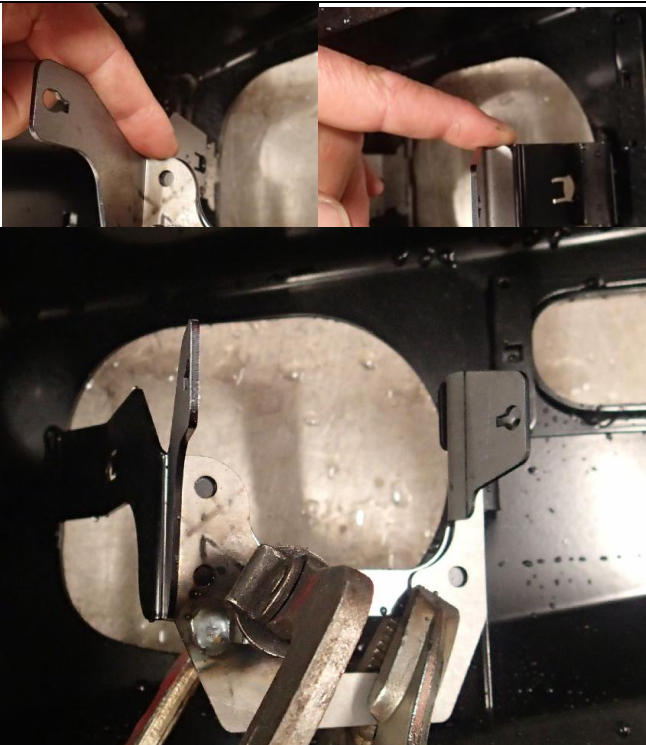
FITTING PROCEDURE



Cut out

Check the fog lamp mount brackets in the bull bar.

If the additional mounting holes are not in the existing fog lamp mounting brackets, as well as the lower cut out area (see diagram) continue from step 1. If the new features are already in place go to step 13



1. Position the LH adaptor bracket to use as a drilling template to the back of RH fog lamp bracket in bull bar
2. Check alignment to the top both sides
3. Clamp in position as shown



4. Mark out holes 3 off on back face with scribe
5. Centre punch hole centres

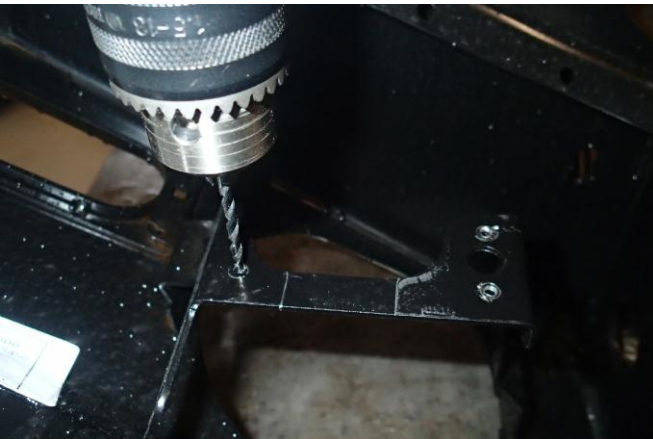
FITTING PROCEDURE



6. Mark hole centre on side of main bracket as shown (the hole that will be drilled is in the centre of the oval hole)



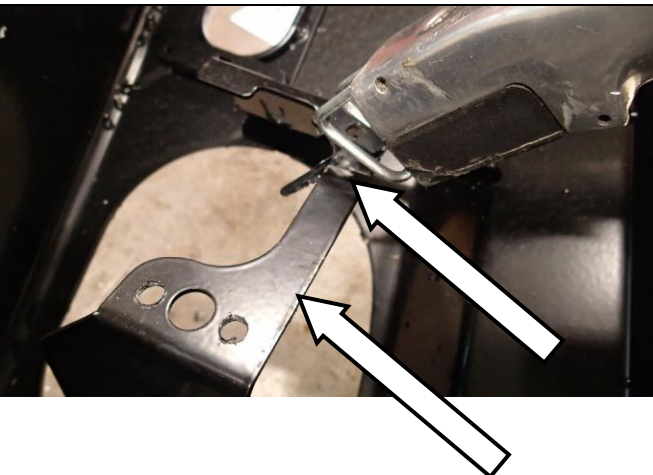
7. Mark lower centre cut out area on main bracket as shown on using both edges of adaptor as a guide
8. Remove adaptor bracket and repeat steps for LH fog lamp bracket



9. Drill out holes progressing from Dia 3mm drill to Dia 7.0mm
10. Access for side hole through front fog lamp opening



Warning: Drilling operations can result in flying metal debris, safety glasses should be worn.



11. Cut out centre lower section as shown using pneumatic hacksaw or similar

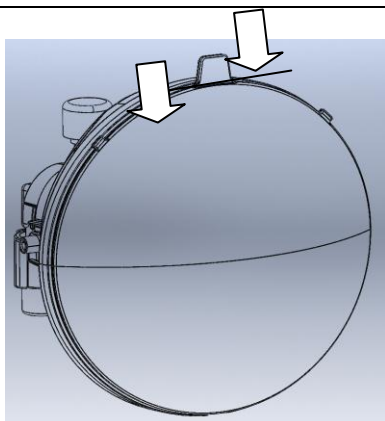


Warning: Cutting operations can result in flying metal debris, safety glasses should be worn.

FITTING PROCEDURE



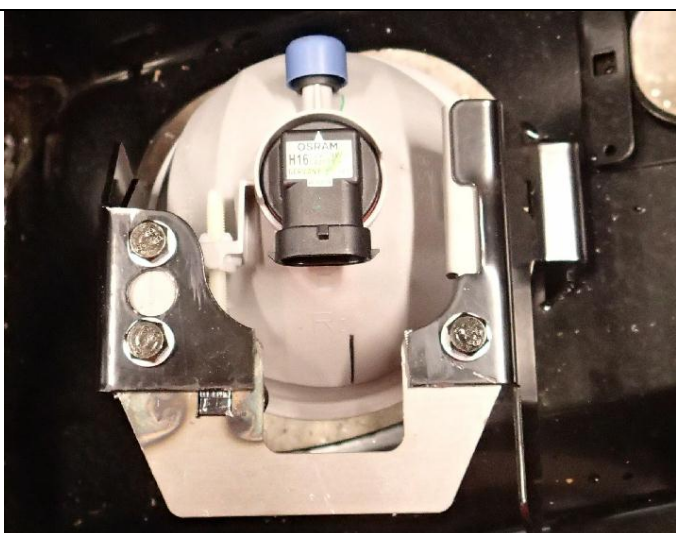
12. Remove burrs and touch up bare metal with rust preventative paint



13. Carefully trim off tab at the top of each 19W lamp as shown using a hacksaw blade or similar fine tooth blade



14. Carefully remove fog lamps and brackets from OE bumper – a trim prising tool is needed to prise the fog lamp lugs from the housing
15. Unscrew the adjuster screw out completely and remove – this is reused so be careful not to break it
16. Fit the lamps into the adaptor bracket as shown and fit adjuster screw



17. Fit each of the adaptor brackets as shown with 19W fog lamps fitted to the original fog brackets in the bull bar using M6 hardware supplied



19W FOG LAMP IN POSITION USING ADAPTOR BRACKETS

