



FITTING INSTRUCTIONS

Part Number: **5615020**

Product **200 SERIES REAR PROTECTION STEP**

Description:

Suited to **07 ON 200 SERIES LANDCRUISER SQUARE RECIEVER AND PINTLE.**
vehicle/s:

WARNING

REGARDING VEHICLES EQUIPPED WITH SRS AIRBAG:

When installed in accordance with these instructions, the rear protection bar does not affect operation of the SRS airbag.

ALSO, NOTE THE FOLLOWING:

- ◆ This product must be installed exactly as per these instructions using only the hardware supplied.
- ◆ In the event of damage to any rear bar component, contact your nearest authorised ARB stockist.
- ◆ Do not use this product for any vehicle make or model, other than those specified by ARB.
- ◆ Do not remove labels from this rear bar.
- ◆ This product or its fixing must not be modified in any way.
- ◆ The installation of this product may require the use of specialized tools and/or techniques
- ◆ It is recommended that this product is only installed by trained personnel
- ◆ These instructions are correct as at the publication date. ARB Corporation Ltd. cannot be held responsible for the impact of any changes subsequently made by the vehicle manufacturer
- ◆ During installation, it is the duty of the installer to check correct operation/clearances of all components
- ◆ Work safely at all times
- ◆ Unless otherwise instructed, tighten fasteners to specified torque

ARB 4x4 ACCESSORIES

Corporate Head Office

42-44 Garden St
Kilsyth, Victoria
AUSTRALIA 3137

Tel: +61 (3) 9761 6622
Fax: +61 (3) 9761 6807

Australian enquiries
North & South American enquiries
Other international enquiries

sales@arb.com.au
sales@arbusa.com
exports@arb.com.au

www.arb.com.au

GENERAL CARE AND MAINTENANCE

By choosing an ARB Bar, you have bought a product that is one of the most sought after 4WD products in the world. Your bar is a properly engineered, reliable, quality accessory that represents excellent value. To keep your bar in original condition it is important to care and maintain it following these recommendations:



- Prior to exposure to the weather your bar should be treated to a Canuba based polish on all exposed surfaces. It is recommended that this is performed on a six monthly basis or following exposure to salt, mud, sand or other contaminants.
- As part of any Pre Trip Preparation, or on an annual basis, it is recommended that a thorough visual inspection of the bar is carried out, making sure that all bolts and other components are torqued to the correct specification. Also check that all wiring sheaths, connectors, and fittings are free of damage. Replace any components as necessary. This service can be performed by your local authorized ARB Stockist.

FITTING REQUIREMENTS

REQUIRED TOOLS FOR FITMENT OF PRODUCT:

BASIC TOOL KIT	FELT TIP MARKING PEN
AIR HACKSAW OR SMALL GRINDER	
MASKING TAPE	

HAVE AVAILABLE THESE SAFETY ITEMS WHEN FITTING PRODUCT:

Protective eyewear		Hearing protection	
--------------------	---	--------------------	---

NOTE: 'WARNING' notes in the fitting procedure relate to OHS situations, where to avoid a potentially hazardous situation it is suggested that protective safety gear be worn or a safe work procedure be employed. If these notes and warnings are not heeded, injury may result.

FASTENER TORQUE SETTINGS:

SIZE	Torque Nm	Torque lbft
M6	9Nm	4lbft
M8	22Nm	16lbft
M10	44Nm	32lbft
M12	77Nm	57lbft

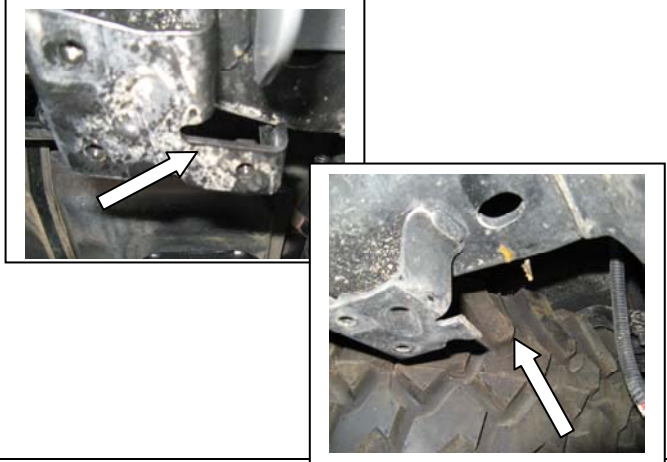
PARTS LISTING			
APPLICATION.	PART NO.	QTY	DESCRIPTION
FIT CAGE NUTS TO BAR.	6151300	9	NUT CAGE M6
FIT REAR BAR TO VEHICLE	5615020	1	REAR BAR 200 SERIES
	5848358	2	PACKER CHASSIS 8MM
	5848359	4	PACKER CHASSIS 3MM
	3194024	4	PLATE CAGE NUTS
	6151305	4	NUT M12 CAGE
	6151340	4	BOLT M12 X 1.75 X 50
	4581064	4	WASHER SPRING M12
	4581049	4	WASHER FLAT ½ INCH
	6191021	2	PINCHWELD X 1000MM
	6821166	2	REFLECTOR RED
	3757724	1	RELOCATION BRACKET
	6151300	2	NUT CAGE M6
	6151017	2	BOLT M6 X 16
	6151042	2	WASHER SPRING M6
	6151046	2	WASHER FLAT M6
	3163009	2	PLUG HIGH LIFT JACK
	180302	4	CABLE TIES
FIT TOP PLATES TO REAR BAR	3194031	1	PLATE TOP REAR BAR
	3194032	1	PLATE TOP ALUMINIUM EXTRUSION
	4590019	1	RUBBER TOP PLATE
	6151256	9	BUTTON HEAD C/SCREW M6 S/STEEL
FIT OPTIONAL MUD FLAPS TO REAR BAR ARB PART No-3500370	3194057	2	PLATE MUD FLAP MOUNT
	6151300	10	NUT CAGE M6
	6151228	10	BOLT M6 X 30 BLACK
	4581082	10	WASHER FLAT M6 BLACK
	4581287	10	WASHER SPRING M6 BLACK
FIT COVER PANEL TO REAR BAR	6522718	1	COVER PANEL
	6151307	4	BOLT CAP SCREW 8MM BLACK
	4581045	4	WASHER FLAT M8 BLACK
	4581047	4	WASHER SPRING M6 BLACK
	6151132	2	NUT FLANGE M8
	6821169	2	RUBBER GROMMET 8MM

NOTE: FACTORY MUDFLAPS WILL NOT FIT THIS REAR BAR. THE BAR WILL FIT ARB MUDFLAPS PART No- 3500370 OR GENERIC AFTERMARKET MUDFLAPS.

FITTING PROCEDURE



1. Remove vehicle bumper, mud flaps, tie down hooks and bumper brackets. Retain both mudflaps as they will be needed later. If your vehicle has the Pintle hook remove this also.



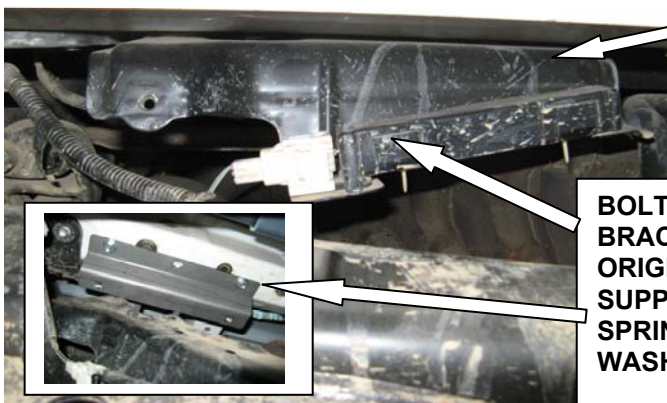
2. Locate the bracket shown on the right hand side and using an air-hacksaw or small grinder remove one leg. This is to clear the new lower bar mount.



Warning: Drilling operations can result in flying metal debris, safety glasses should be



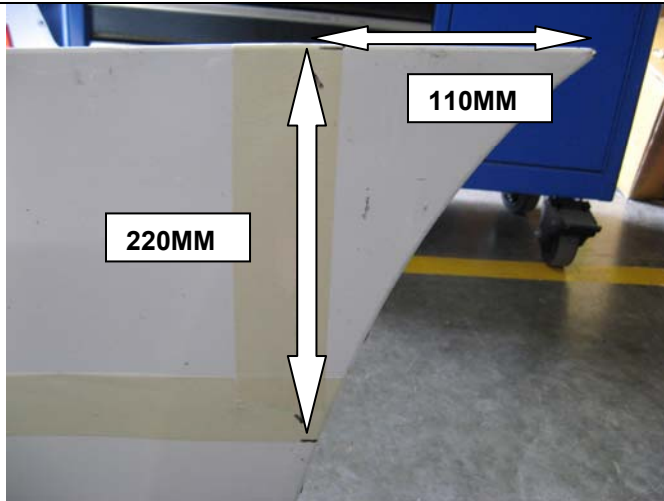
3. Locate the six pin plug on the left hand side and un-clip from its mount. Using a zip tie attach it to the loom that runs next to it. This is to clear the front face of the rear bar.



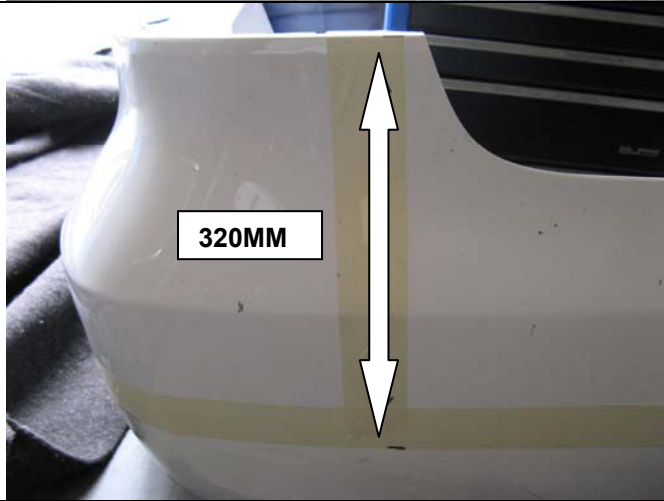
4. Remove this bracket from vehicle (shown with arrow) and relocate with new bracket supplied in kit. Make sure all wires are clear of the exhaust. Relocation bracket fitted to vehicle shown inset.

BOLT O.E BRACKET TO NEW BRACKET USING TWO ORIGINAL BOLTS AND TWO SUPPLIED M6 BOLTS, SPRING WASHERS AND FLAT WASHERS.

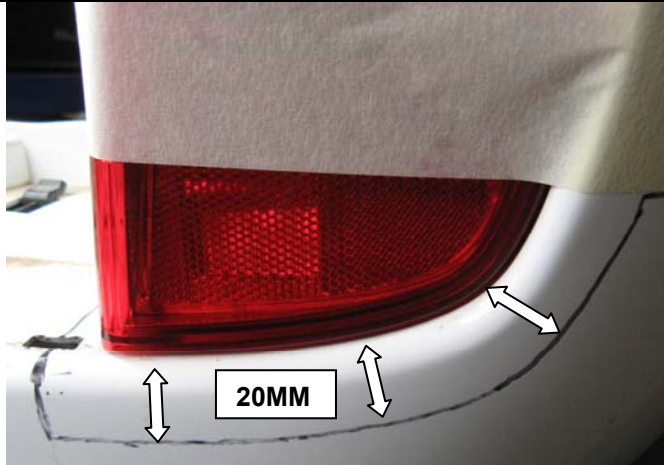
FITTING PROCEDURE



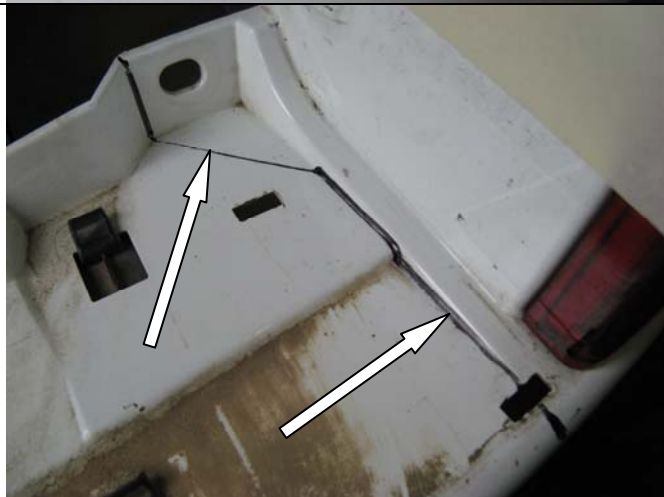
5. From the top front edge of the bumper measure towards the rear 110mm and make a mark. From this point measure down 220mm and mark. This is the cut line.



6. From the top edge of the bar measure straight down 320mm and mark. Join marked lines with a length of masking tape making sure it is straight. This will be the cut line. **NOTE: Make sure line is straight by sighting down length of bumper. If not re-adjust tape so a straight line is achieved particularly around corner near reflector.**



7. From the edge of the fog light/reflector measure and mark several points 20mm away from the lens. Join these marks to form a line as shown in the photo.



8. Mark a line on top surface of bar as per the picture and join up to the line marked in step 7. Remove the fog light and place aside.

FITTING PROCEDURE



9. For a neater finish use a 25mm hole saw to cut the edges as shown in the picture.



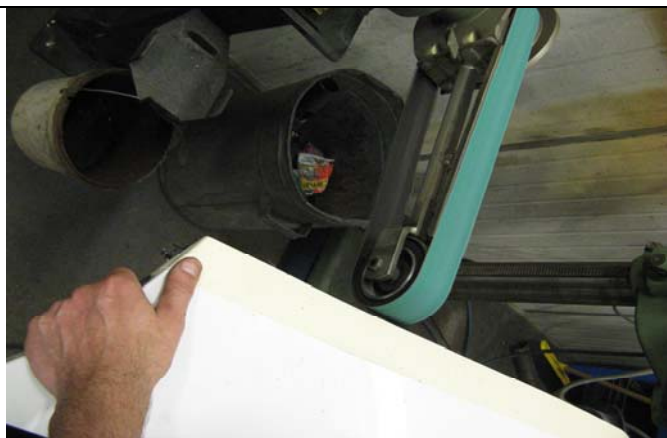
Warning: Drilling operations can result in flying metal debris, safety glasses should be



10. Using an air operated hacksaw or small grinder with a cutting wheel cut the bumper using the marked lines.



Warning: Drilling operations can result in flying metal debris, safety glasses should be



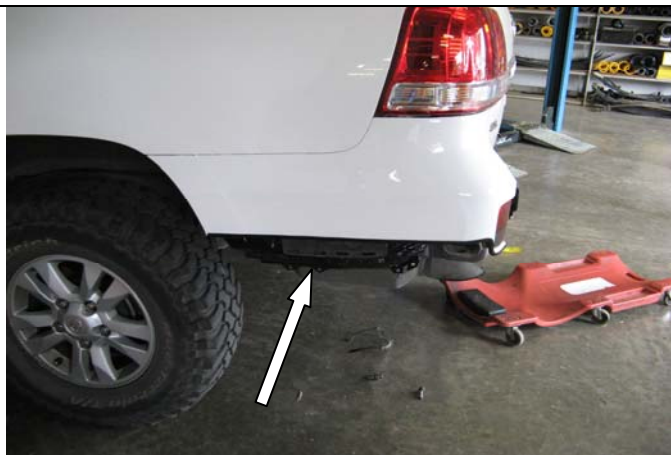
11. After cutting file and clean up all burrs.

NOTE: For a better finish use a belt sander to clean edges.



12. Apply pinch weld to cut surface stopping at the base of the fog light as shown. Fit bumper back on vehicle.

FITTING PROCEDURE



13. **OPTIONAL:** On light coloured vehicles paint the lower edges of the vehicle with a black satin finish paint.



14. Fit M6 cage nuts to top surface of bar, nine in total.



15. With the help of another person place bar gently on vehicle and secure loosely with original tie down bolts in chassis.



16. Working on one side at a time remove bolts and place the 8mm packers between bar mount and chassis then tighten.



17. Open tailgate and measure distance.

NOTE: THE POSITION OF THE BODY IN RELATION TO THE CHASSIS CAN VARY. ADJUST REAR BAR ACCORDINGLY AND/ OR ADD MORE PACKERS.

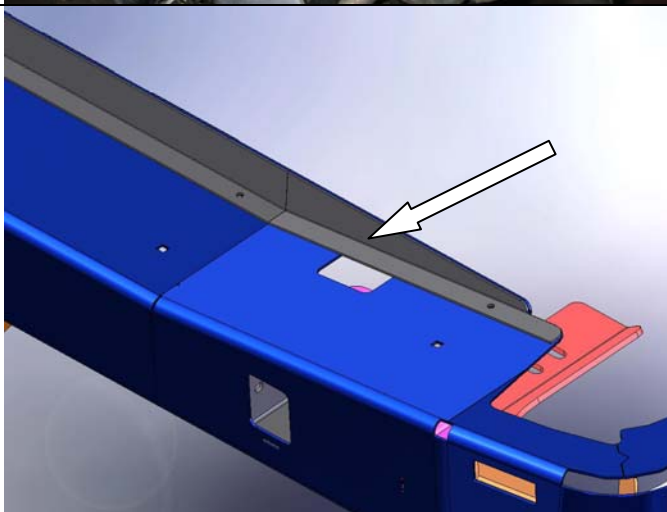


18. Make sure the distance is no less than 10mm. If not add the 3mm packers to achieve a **minimum 10mm**. **NOTE: Distance between plastic bumper and bar must be 10mm or greater to allow for movement.**

NOTE: DO NOT PLACE LOADS GREATER THAN 100 KG ON THE TAILGATE

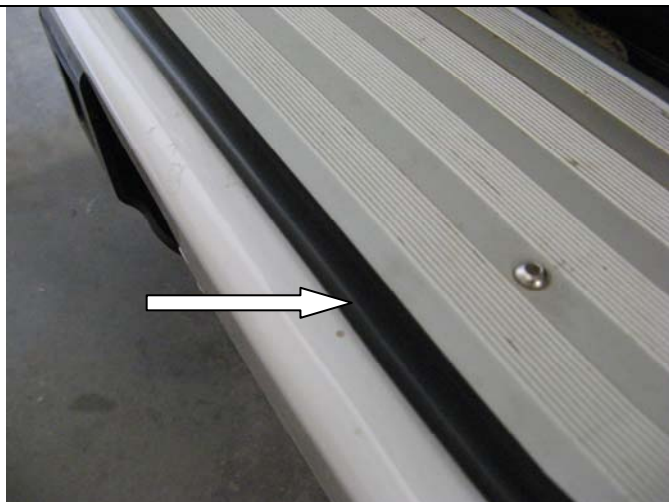


19. Place the M12 cage nuts into cage nut plates and insert through hole in the side of the chassis. Attach to bar using M12 bolts, spring washers and flat washers. Tighten all bolts. Once the height has been set, and bar wing level with bumper cut, tighten all bolts.



20. Carefully place the top plate onto bar and attach to front holes using M6 stainless button head cap screws.

FITTING PROCEDURE



21. Place rubber extrusion around aluminium plate as shown. Trim edges flush and attach to bar using M6 stainless button head cap screws.



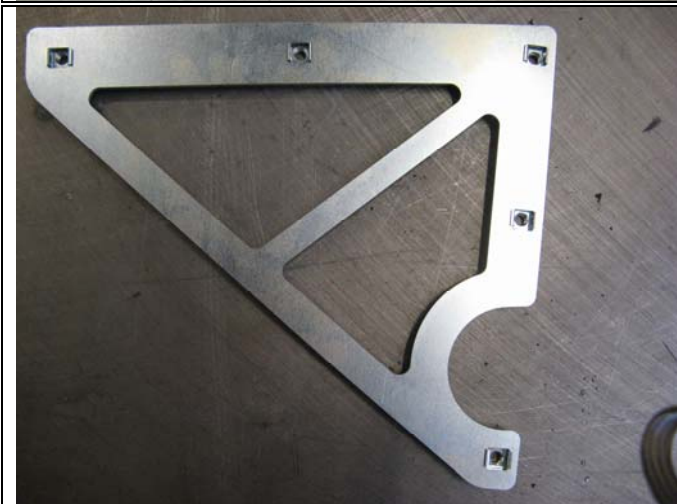
22. Install reflectors and high lift jack plugs.



23. Cut top of original mud flap as shown and attach to vehicle and bumper with original hardware.



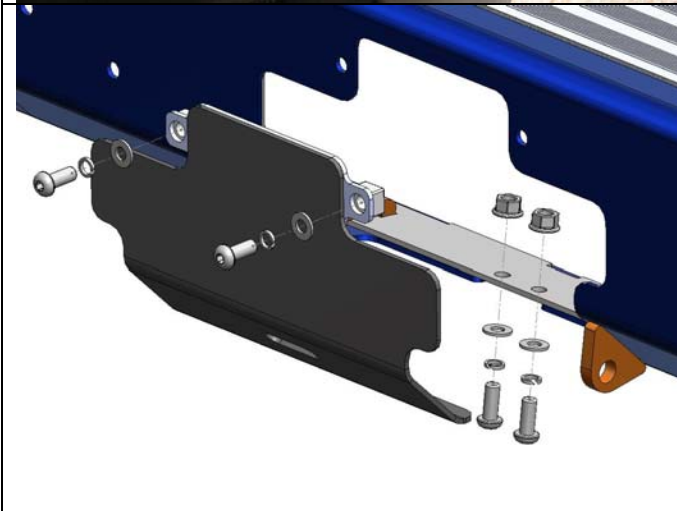
24. If fitting optional mud flaps place mount on mud flap as shown and mark holes on the outer edge (left hand side shown). Drill to 7mm.



25. Place 5 M6 cage nuts onto each mount and attach mud flap through bar and into mount using black M6 bolts, washers and spring washers.



26. Attach original trailer plug to bar by marking two holes in a convenient position under bar. Drill these holes out to 4mm and attach using original hardware. If your vehicle had the Pintle hook re-attach this also.



27. For all models except **SQUARE RECIEVER** a cover panel is provided. Attach using M8 hardware as shown.
28. For **SQUARE RECIEVER** models use the two small rubber grommets in the fitting kit to cover the two top mounting holes for the cover plate.

FITTED PRODUCT

