



A Division Of **ARB Corporation Limited**

Head Office: ARB Corporation Ltd
Postal Address: PO Box 105, Kilsyth 3137 Australia
Street Address: 42 - 44 Garden Street
Kilsyth, Victoria 3137 Australia

Tel: +61 3 9761 6622 • Fax: +61 3 9761 6807

www.arb.com.au
ABN 31 006 708 756

DECEMBER 1998

ASSEMBLY INSTRUCTIONS TO SUIT **FIXED END GREASABLE PIN**

Part Nos:

**OMEGP1
OMEGP2
OMEGP3
OMEGP4
OMEGP5
OMEGP6
OMEGP8**

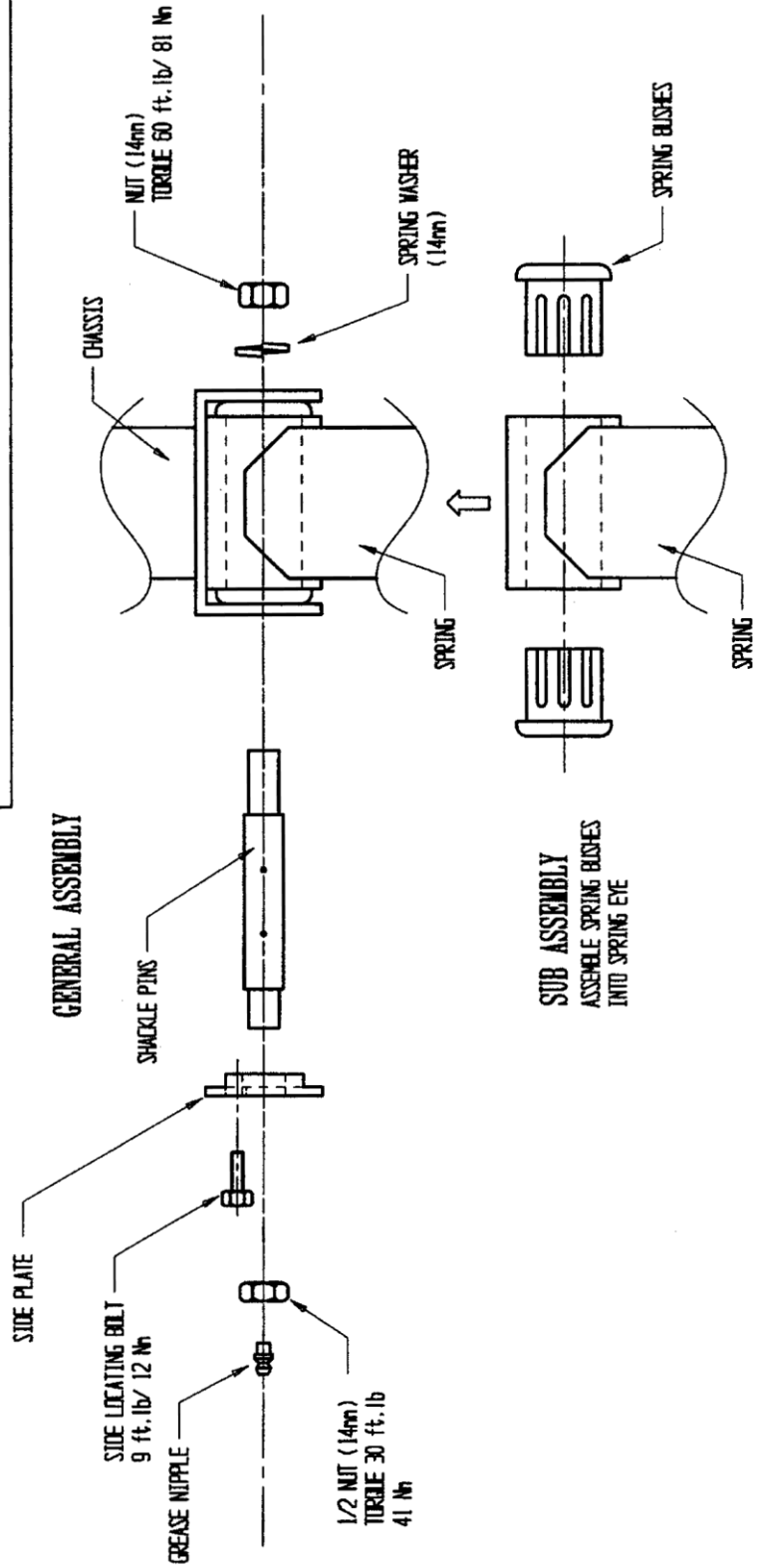
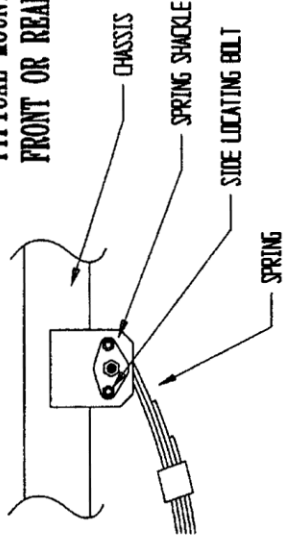
PAGE 1 OF 2

PROCEDURE - REFER DIAGRAM OVERLEAF

- 1. Screw short thread end of greasable pin into fixed end spigot and tighten firmly.**
- 2. Place locking 1/2 nut on protruding thread and torque to 30ft lb (41Nm).**
- 3. Install OME polyurethane bushes (greased) in spring eye.**
- 4. Place fixed end pin into vehicle spring hanger, sliding pin through spring eye ensuring locating spigot is in correct position by aligning side locating bolt, torque to 9ft lb (12Nm).**
- 5. Complete assembly by fitting spring washer and lock nut and torque to 60ft lb (81Nm).**
- 6. Install grease nipple into fixed end pin and grease with OME slippery grease pt/no ESG1002.**

**GREASABLE SPRING SHACKLE
ASSEMBLY INSTRUCTIONS FIXED END
PART NUMBERS: OMEGP1, OMEGP2,
OMEGP3, OMEGP4, OMEGP5, OMEGP6**

**TYPICAL MOUNTING POSITION
FRONT OR REAR**



**SUB ASSEMBLY
ASSEMBLE SPRING BUSHES
INTO SPRING EYE**