



OLD MAN EMU

FITTING INSTRUCTIONS

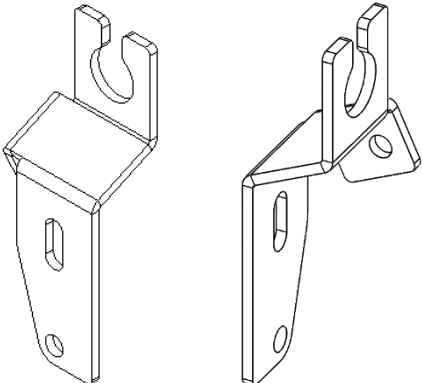
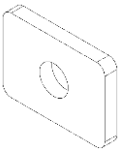
FK99

BRAKELINE EXTENSION & SHOCK MOUNT KIT
SUITS SUZUKI JIMNY JK64/74 2019 ON

TOOLS REQUIRED

- Ring / Open end Spanner set (Metric)
- Pneumatic reciprocating saw/hack saw
- Touch-up paint

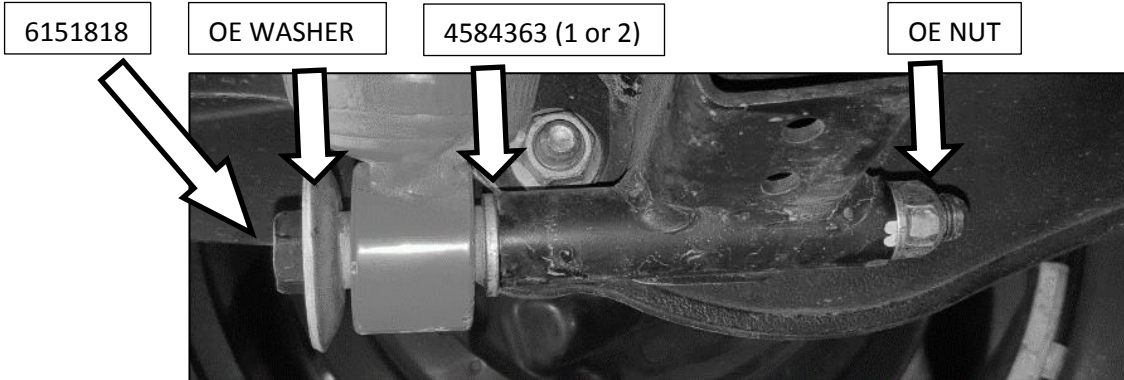
KIT CONTENTS

PART NO.	QTY	Description	Picture
3752654	1	BRACKET BRAKE EXTENSION JIMNY REAR	
3193881	1	PLATE LOCATE JIMNY	
6151180	3	BOLT HXHD M6X1.0X20	
6151162	3	NUT HEX NYLOC M6X1.0	
4584369	6	WASHER FLAT M6X16X1.2	
6151818	2	BOLT HXHD FL M12X1.25X150	
4584363	4	WASHER FLAT M12X26X4	

Fitting Procedure

LOWER SHOCK MOUNT SPACING

1. Replace OE Lower Shock Bolt with 6151818 supplied. Use 4584363 between axle mount and lower bush to space shock body away from axle. Use spacers as required.
2. Reuse OE nut and torque to manufacturers specification.



BRAKELINE EXTENSION BRACKET

Bracket Location

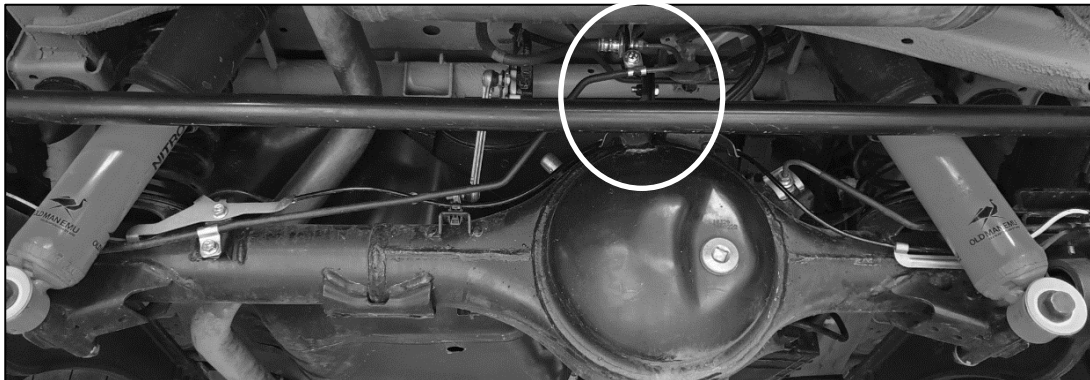


Figure 1

1. Remove OE brake hose retainer clip (U-clip) and hard-line mount. Secure brake line.

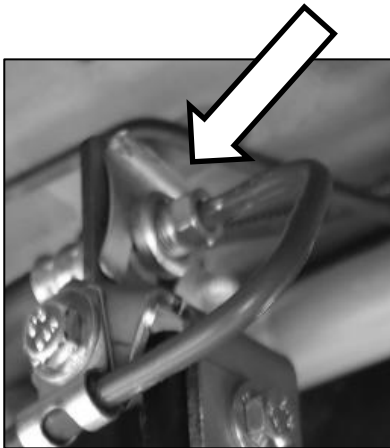


Figure 2

2. Using a reciprocating saw or hacksaw, cut the upper corner of OE brake bracket. Bend open and remove brake line.

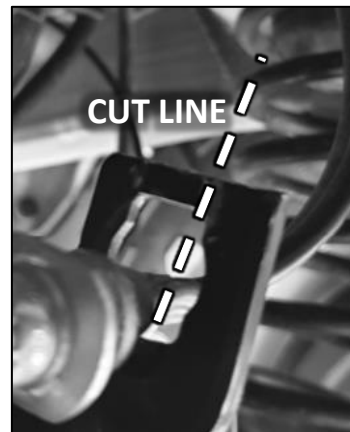


Figure 3

Apply paint to prevent rust and bend back to OE position.

3. Mount new supplied brake extension bracket using M6 fasteners provided ensuring locating plate is captured on the rear side by OE tabs as shown in *figure 5*.

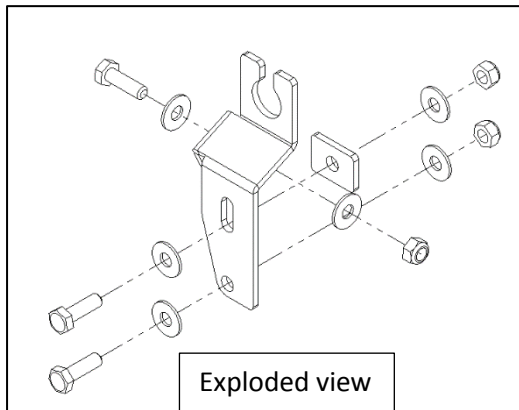


Figure 4

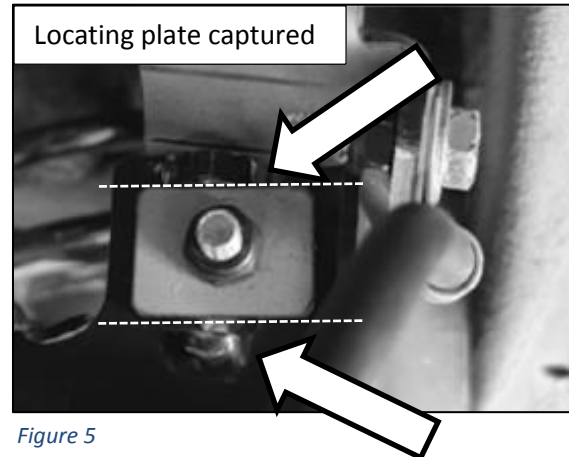


Figure 5

4. Attach OE hard line mount to bracket (*figure 6*). Reattach Brake hose U-clip (*figure 7*). Manipulate brake hard line by lightly pressing towards/against the axle by hand (*figure 1*)

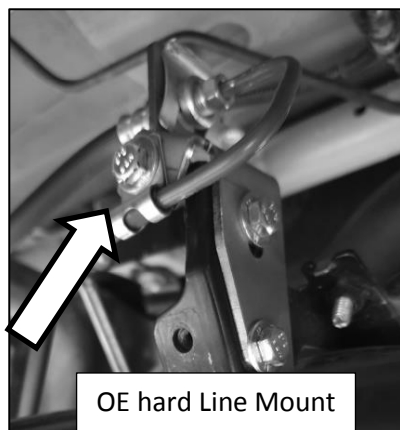


Figure 6

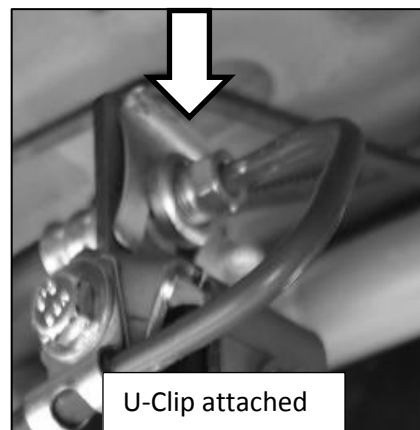


Figure 7