

TOYOTA 120 SERIES PRADO

<p style="text-align: center;">ROLLER DRAWER INSTALLATION TO ADR 34/02 1355 Series: Vehicle specific instruction and drawing Optional Extension Floor and Side Floor Kits are supplied separately.</p> <p>NOTE: Do not elongate any holes Read and understand all instructions before proceeding Tub liner must be removed for correct fitment of side floors <i>Throughout these instructions *rear refers to *rear of vehicle *front refers to *front of vehicle.</i></p>
<p>INSTRUCTIONS ARE AVAILABLE FROM ARB STOCKISTS.</p> <p>SECTION 1:- FRAME PREPERATION.....General Instructions- Supplied In Drawer Module</p> <p>SECTION 2:- VEHICLE SPECIFIC INSTALLATION.....This Instruction</p> <p>SECTION 3:- REASSEMBLY.....General Instructions- Supplied In Drawer Module</p> <p>SECTION 4:- OPTIONAL STACKER DRAWER.....General Instructions- Supplied In Drawer Module</p> <p>SECTION 5:- CUSTOM & INDIVIDUAL FIT.....General Instructions- Supplied In Drawer Module</p>

2) VEHICLE SPECIFIC INSTALLATION:

<p>– Ensure you have completed General Instructions Section One – Frame preparation before following this vehicle specific instruction.</p> <p>The General instructions are supplied with the Outback Solutions Drawer Modules and are also available from your ARB stockist.</p>
<p>2.1/-Fold second row seats forward to allow maximum room for frame installation.</p>
<p>2.2/- Remove plastic covers and locking plates for rear third row seats and remove the eight bolts.</p>
<p>2.3/- Replace four bolts closest to the centre of the vehicle and leaving four vacant holes 490mm apart.</p>
<p>2.4/- Cut slits in the floor mat and fold “ears” back to expose vacant bolt holes so plastic spacer blocks supplied sit on metal part of the floor.</p>
<p>2.5/- With an assistant, carefully lift the frame into the vehicle taking care not to scratch the vehicle. Ensure the frame is oriented so the drawers will be accessible from the rear of the vehicle. Ensure spacers are in position from steps 1.7 and 1.8 of the General Instructions Supplied with the drawer module.</p>

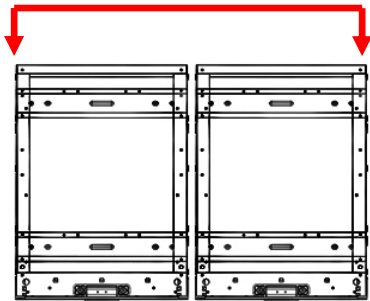
Vehicle Specific Instructions

2.6/- If fitting the optional side floor for drawer modules, attach front floor support wing brackets now.

Bolt the two brackets onto **front** outer corners of drawer frame by removing and reusing the existing two top outside 8mm hexagon head bolts, spring and flat washers from the **front** of drawer frame.



Skip this step if not fitting optional side floor.



**2.7/- If fitting the optional side floor for drawer
Side bracket installation:**

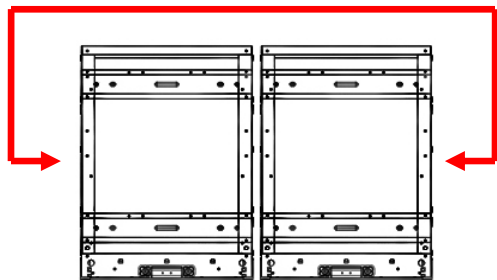
Bolt side brackets onto outsides of bearing channels using four (4) 6mm x 20mm hexagon head bolts.

Drawer with Fixed Floor Modules:

Loosely fasten two of the 6mm bolts into the two captive nuts inserted in outsides sides of bearing channels, slip the two top holes in side bracket over bolt heads, from inside of bearing channels fasten bottom of side bracket into the two captive nuts in bracket.

Drawer with Roller Floor Modules:

From inside of bearing channels fasten top and bottom of side bracket into the four captive nuts in bracket.



Vehicle Specific Instructions

2.8/-Side Fill Panel fixing position:

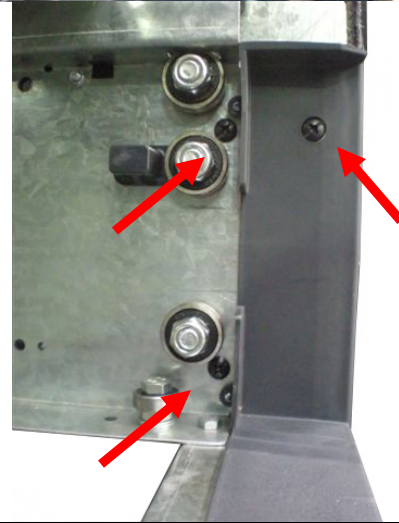
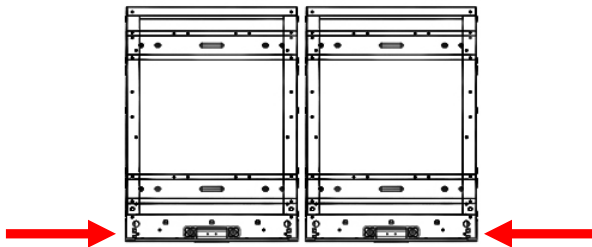
Position side fill panel onto outside of bearing channels by pushing/positioning side panels in from **front** of vehicle this allows carpet to fold back neatly against interior trim of vehicle.

Side Fill Panel fastening:

Fasten Side Fill Panel to outside of bearing channel using three (3) 6mm x 20mm black round head set screws.

First fasten through **top** hole in plastic fascia panel into captive nut in Side Fill Panel.

Second, fasten through holes in outside bearing channel located **top** and **bottom** of front bearings.



2.9/-Side Floor installation:

Using a 4mm hexagon head Allen key....

First fasten fixed floor section of floor onto Front Wing Panel and Side Bracket using four (4) black countersunk set screws.

Second clip the **front** locator clips on the underside of the removable floor section into slots in side bracket, fasten **rear** end down using latch.



3.0/- Positioning in vehicle – Center Left to right.

If fitting an optional Side Floor, maneuver assembly to ensure the gap between side floor and walls is equal on both sides- this centers the frame in the vehicle.

If **NOT** fitting an optional Side Floor, position the assembly central in the vehicle. Confirm for equal measurements on each side between the assembly and vehicle body.

3.1/- Positioning frame in vehicle – Front to rear.

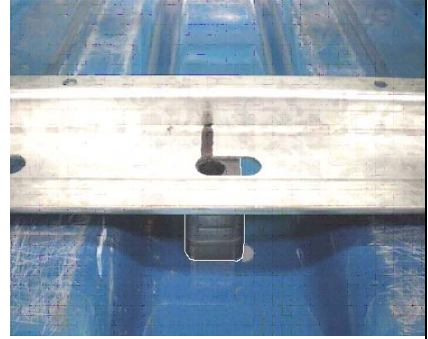
Position the drawer frame so that the points marked in SECTION 1 step 1.6 and as indicated in F) and (G) on the diagram below are over the vacant holes from step 2.3.

Vehicle Specific Instructions

3.2/- Use measurements from item "A" , "B" , "F" and "G" of the vehicle specific diagram for this step. The diagram is at the end of this instruction.

With the frame in position, place 30mm spacer blocks ("A") assembled in step 1.9 lengthways between the metal floor of the vehicle and the underside of the forward mount rail and under the marks on the mount rails from step 1.6 ("G").

Place 35mm spacer blocks ("B") assembled in step 1.9 lengthways between the metal floor of the vehicle and the underside of the rear mount rail and under the marks on the mount rails from step 1.6 ("F").



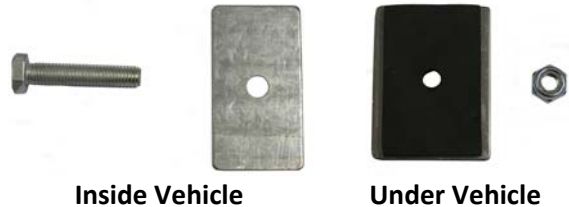
3.3/- Check frame is central in vehicle and where fitted and that side floors are free to operate.

3.4/- Ensure all clear under vehicle floor before drilling any holes. It is the responsibility of the fitter to ensure that drilling through the vehicle floor will not damage vehicle components. Check for items such as fuel lines, break lines, fuel tanks, spare tires and non standard accessories.

3.5/- Using a short body electric or battery powered drill and 10mm drill bit drill straight down through holes marked in SECTION 1 Step 1.6 through plastic spacers to underside of vehicle.

3.6/- Remove all drill swarf from vehicle body and apply a rust preventive coating to drilled holes from underside of vehicle.

3.7/- Bolt frame down through drilled holes using four (4) M10x50mm bolts, M10x70x40 flat plates inside the vehicle and weatherproof plates and Nyloc nuts on underside of vehicle.

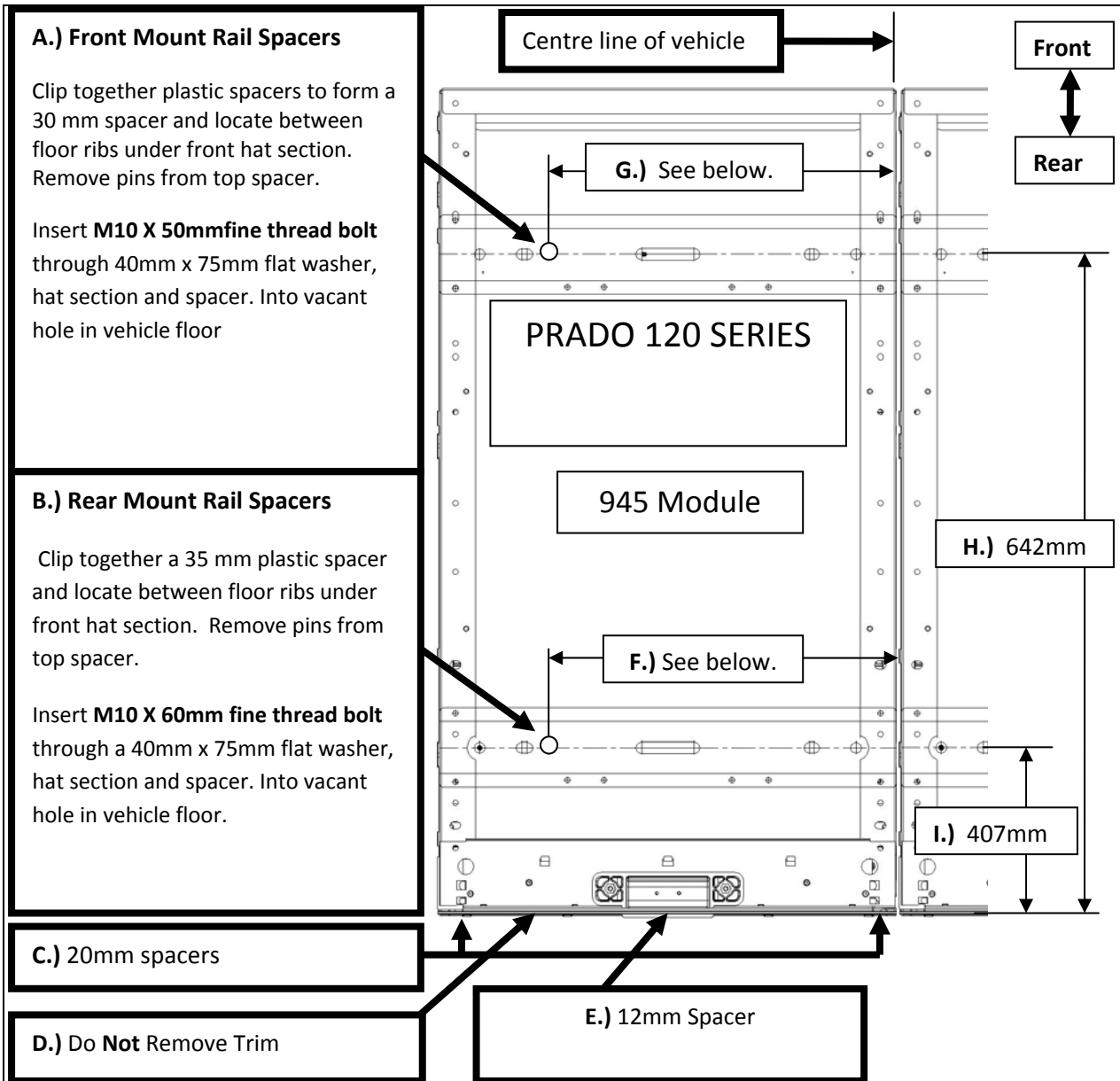


Inside Vehicle

Under Vehicle

3.8/- Return to General instructions step 3 to complete installation. The General instructions are supplied with the Outback Solutions Drawer Modules and are also available from your ARB stockist.

Vehicle Specific Diagram



Prado 120 Series			
A.)	30mm Spacers	F.)	Left -256mm Right-231mm
B.)	35mm Spacers	G.)	Left -256mm Right-231mm
C.)	20mm Spacers	H.)	782 mm
D.)	Do Not Remove Trim	I.)	407 mm
E.)	12mm Spacer	J.)	N/A