

ARB AIR LOCKER *Air Operated Locking Differentials*

RD102 Dana 35,27 SPL,3.54 & UP

| ITEM # | QTY | DESCRIPTION | PART # | NOTES |
|--------|-----|------------------------------------|----------|-------|
| 01 | 1 | SPLINED SIDE GEAR | SEE NOTE | 3 |
| 02 | 1 | SPIDER BLOCK | 070801 | |
| 03 | 1 | LONG CROSS SHAFT | 061302 | |
| 04 | 1 | SIDE GEAR | SEE NOTE | 3 |
| 05 | 2 | SIDE GEAR THRUST WASHER | 151011 | |
| 06 | 2 | COUNTERSUNK SCREW | 200213 | |
| 07 | 2 | CROSS SHAFT RETAINING PIN | 120601 | |
| 08 | 2 | SEAL HOUSING O-RING | 160235 | 1 |
| 09 | 1 | SEAL HOUSING ASSEMBLY | 081801 | |
| 10 | 2 | SHIM KIT | SHK003 | |
| * | 2 | MASTER SHIM | 150325 | |
| 11 | 2 | TAPERED ROLLER BEARING | 160109 | 2 |
| 12 | 1 | FLANGE CAP ASSEMBLY | 028504 | |
| 13 | 1 | BONDED SEAL | 160701 | |
| 14 | 1 | CLUTCH GEAR | 050803 | |
| 15 | 8 | RETURN SPRING | 150107 | |
| 16 | 1 | SHORT CROSS SHAFT | 061402 | |
| 17 | 3 | PINION GEAR | SEE NOTE | 3 |
| 18 | 3 | PINION THRUST WASHER | 151112 | |
| 19 | 1 | DIFFERENTIAL CASE | 013104 | |
| * | 1 | BULKHEAD FITTING KIT (O-RING TYPE) | 170111 | |
| * | 1 | PUSH-IN FITTING (5mm to 1/8" BSPP) | 170201 | |
| * | 1 | AIR LINE (5mm DIA X 6m LONG) | 170301 | |
| * | 1 | NIPPLE (1/8" to 1/8" BSPT) | 170501 | |
| * | 1 | SOLENOID VALVE (12V) | 180103 | |
| * | 1 | SWITCH | 180209 | |
| * | 1 | SWITCH COVER (REAR) | 180211 | |
| * | 10 | CABLE TIE | 180301 | |
| * | 1 | WARNING LABEL | 210101 | |
| * | 1 | BUMPER STICKER | 210102 | |
| * | 1 | OPERATION & SERVICE MANUAL | 210200 | |
| * | 1 | INSTALLATION GUIDE | 2102102 | |

* Not illustrated in exploded view.

Specs:

| | |
|--------------------|----------------------------|
| Axle Spline | 27 tooth, Ø29.5mm [1.16"] |
| Ratio Supported | 3.54:1 & up |
| Ring Gear ID | 120.7mm [4.75"] |
| Ring Gear OD | 193mm [7.6"] |
| Ring Gear Bolts | 8 bolts on Ø146mm [5.75"] |
| Ring Gear Torque | 75Nm [55 ft-lb] |
| Backlash | 0.15-0.25mm [0.006-0.010"] |
| Bearing Cap Torque | 75Nm [55 ft-lb] |

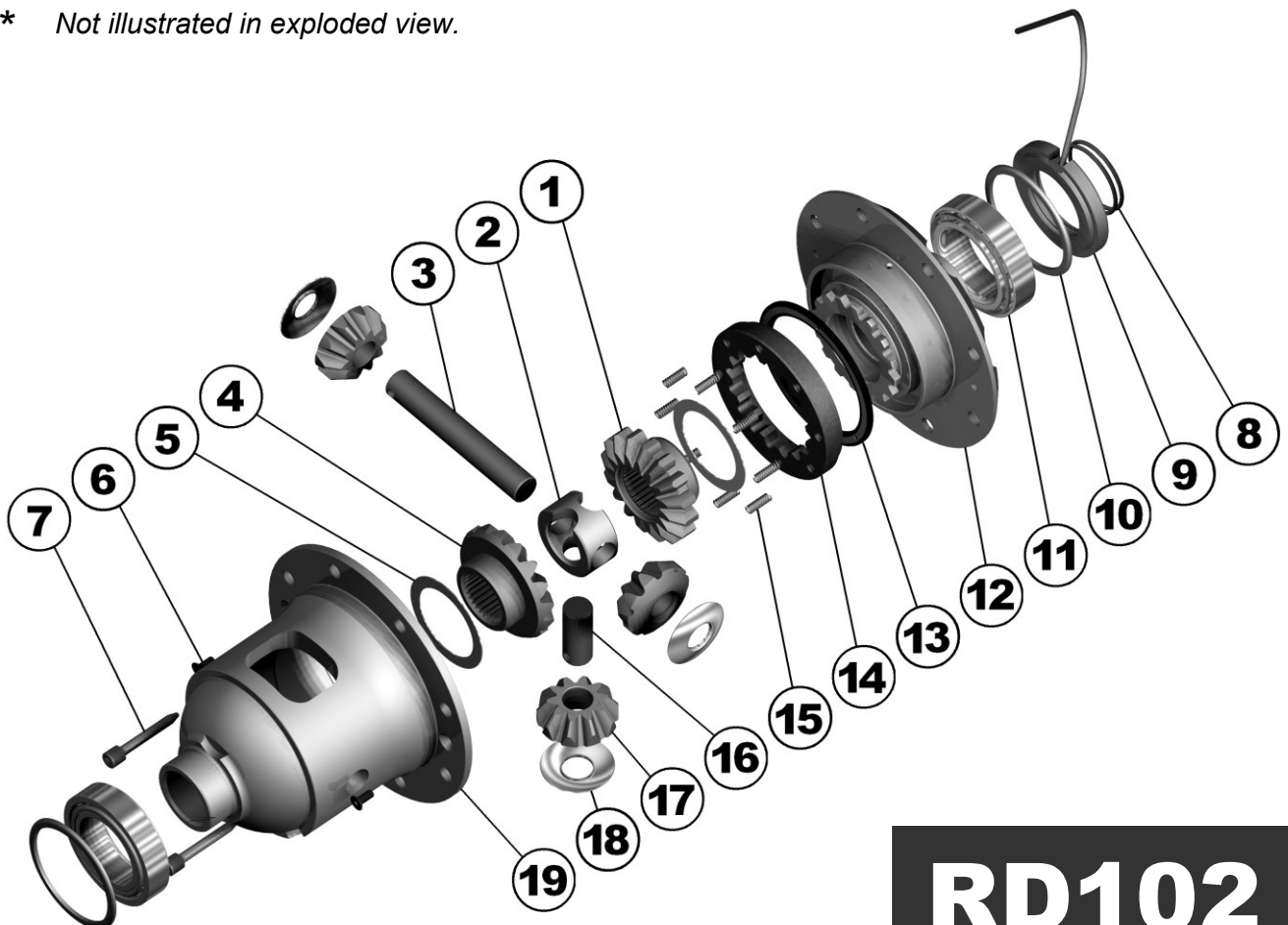
Notes:

- For replacement O-rings use only BS133 Viton 75.
- For replacement bearing use Timken part # LM102949 / LM102910.
- Available only as complete 5 gear set #728J011C

For ratios of 3.31:1 and down refer to RD103 ([Section 2.103](#)).

Newer OEM Dana 35 ring and pinion sets use 7/16" bolts. The flange holes of the Air Locker must be reamed from Ø3/8" to Ø7/16" to suit.

Some OEM Dana 35 drive pinion gears extend too far into the centre and converge with the differential carrier. Refer to ring and pinion modification note ([Section 5.6](#)) for correction.



RD102

