

ARB AIR LOCKER *Air Operated Locking Differentials*

RD159 Nissan M226,32 SPL,12 bolt RG

Specs:

Axle Spline	32 tooth, Ø35.8mm [1.41"]
Ratio Supported	All
Ring Gear ID	141.3mm [5.56"]
Ring Gear OD	226mm [8.9"]
Ring Gear Bolts	12 bolts on Ø168.3mm [6.63"]
Ring Gear Torque	198Nm [146 ft-lb]
Backlash	0.08-0.13mm [0.003-0.005"]
Bearing Cap Torque	108Nm [80 ft-lb]

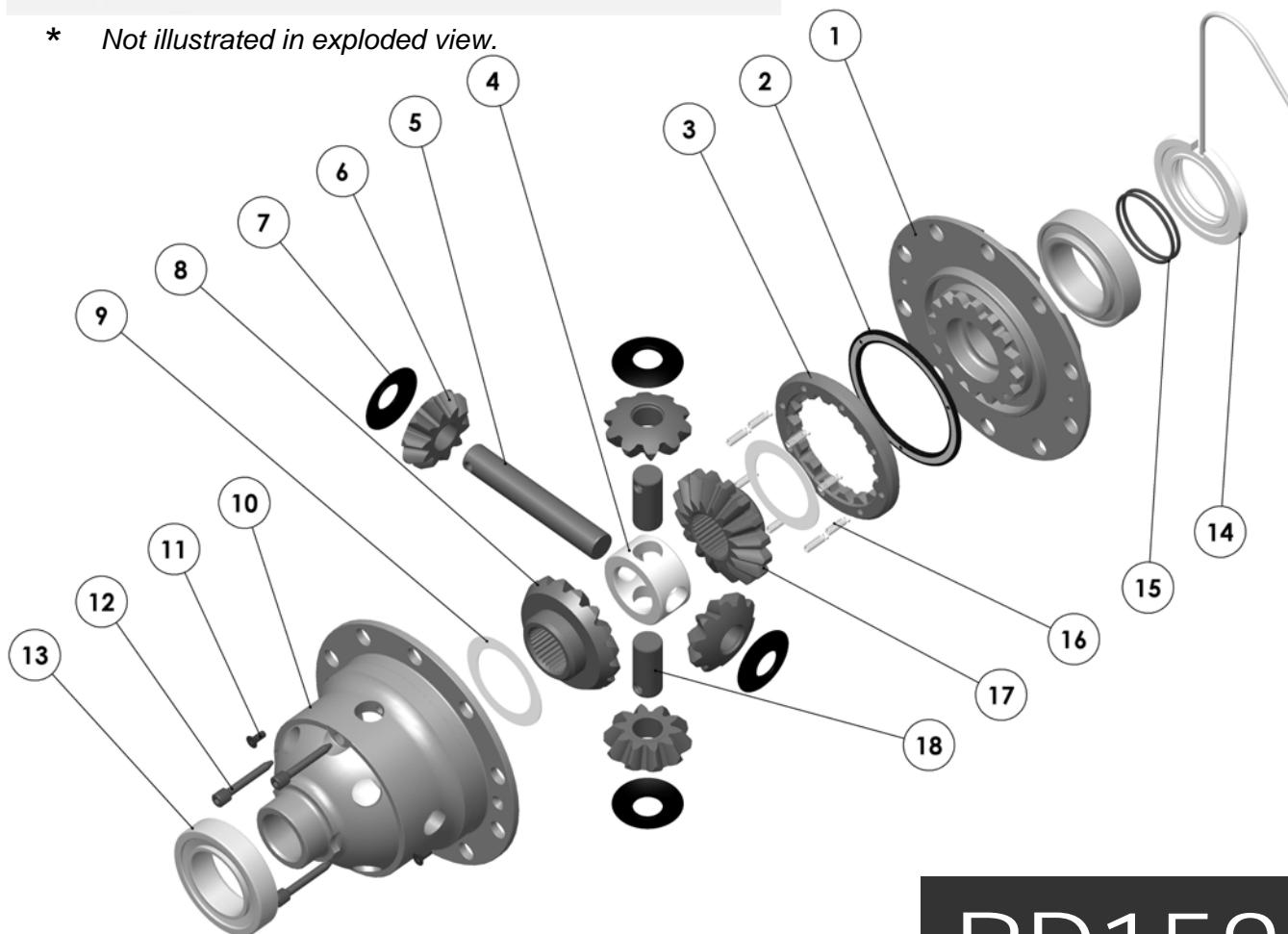
ITEM #	QTY	DESCRIPTION	PART #	NOTES
01	1	FLANGE CAP ASSEMBLY	027325	
02	1	BONDED SEAL	160702	
03	1	CLUTCH GEAR	050806	
04	1	SPIDER BLOCK	070201	
05	1	LONG CROSS SHAFT	060204	
06	4	PINION GEAR	SEE NOTE	2
07	4	PINION THRUST WASHER	151110	
08	1	SIDE GEAR	SEE NOTE	2
09	2	SIDE GEAR THRUST WASHER	151010	
10	1	DIFFERENTIAL CASE	013025	
11	2	COUNTERSUNK SCREW	200213	
12	3	RETAINING PIN	120601	
13	-	TAPERED ROLLER BEARING	NOT SUPPLIED	
14	1	SEAL HOUSING ASSEMBLY	081809	
15	2	SEAL HOUSING O-RINGS	160207	1
16	8	RETURN SPRINGS	150113	
17	1	SPLINED SIDE GEAR	SEE NOTE	2
18	2	SHORT CROSS SHAFT	060403	
*	1	BULKHEAD FITTING KIT (O-RING TYPE)	170111	
*	1	PUSH-IN FITTING (5mm to 1/8"BSPP)	170201	
*	1	NIPPLE (1/8" to 1/8" BSPT)	170501	
*	1	AIR LINE (5mm DIA X 6m LONG)	170301	
*	1	SOLENOID VALVE (12V)	180103	
*	1	SWITCH	180209	
*	1	SWITCH COVER (REAR)	180211	
*	10	CABLE TIE	180301	
*	1	WARNING LABEL	210101	
*	1	BUMPER STICKER	210102	
*	1	OPERATION & SERVICE MANUAL	210200	
*	1	INSTALLATION GUIDE	2102159	

Notes:

- 1 For replacement O-rings use only BS136 Viton 75.
- 2 Available only as complete 6 gear set # 728H171

For models with 10 bolt Ring Gear refer to RD149 ([Section 2.149](#))

* Not illustrated in exploded view.



RD159

