

OLD MAN EMU FITTING INSTRUCTIONS

ELSK01 Leaf Spring Service Kit

Clip liner kit to suit EL springs

HAND TOOLS & LUBRICANTS REQUIRED

Leaf spring removal tools, 14mm Spanner, hacksaw, vice grips, G-clamp & TB1001

KIT CONTENTS

ITEM	PART NUMBER	DESCRIPTION	QTY
ELSK01	ELCL100	CLIP LINER EL SPRING 100MM	6

LEAF SPRING PREPARATION

1. Remove the leaf spring from the vehicle.
2. Remove all the U-clip retaining bolts as shown.
3. To disassemble the leaf spring ensure the spring is well secured with a clamp before releasing the centre spring bolt as shown. Use vice grips to secure the round head of the centre bolt if required.





OLD MAN EMU FITTING INSTRUCTIONS

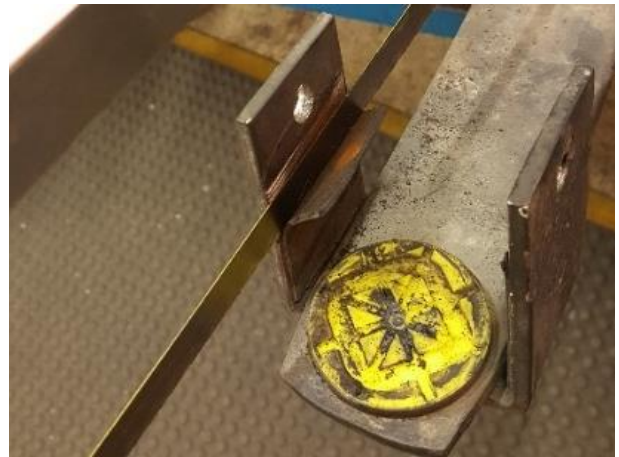
4. Separate each leaf spring as shown.



CLIP LINER FITMENT

If the spring is fitted with a rubber liner then the liner will need to be replaced with a plastic clip liner.

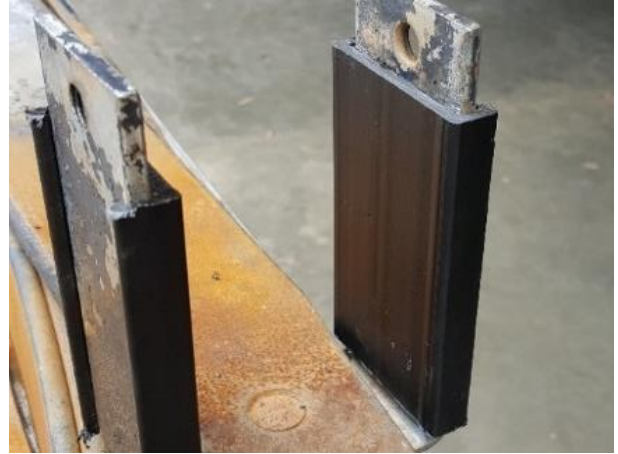
1. Identify the leafs that have U-clips attached. To remove the existing rubber liners use a hack saw as shown.
2. Ensure that all of the rubber is removed, use a chisel if any rubber remains.





OLD MAN EMU FITTING INSTRUCTIONS

3. Refer to Table 1 for clip liner lengths to suit your leaf spring. Cut the clip liner material using a hack saw or similar.
4. Push the clip liner over the clip and right to the bottom as shown. Grease the face of the clip using TB1001.



LEAF SPRING ASSEMBLY

While the spring is apart check the condition of the yellow inter-leaf liners. Replace inter-leaf liners (Emu Leaf Service Kit No. ELSK02) at this stage if required.

If the spring is not fitted with 1.6mm thick steel inter-leaf spacers at the centre bolt consider adding these spacers at this stage. These spacers are found in ELSK03 (for 60mm wide springs) or ELSK04 (for 70mm wide springs).

Assemble the leaf spring back together with the inter-leaf plates using the centre bolt to align each item. Pull the leaf pack together with a clamp and fasten the centre bolt nut. Be careful not to overtighten the U-Clip bolts as the individual leaves need to move freely between the U-Clip liners. Before re-fitting the leaf spring apply grease (Part No. TB1001), to all bush faces and inserts.

The leaf spring has now been serviced with new U-Clip liners and is ready to be fitted to the vehicle.

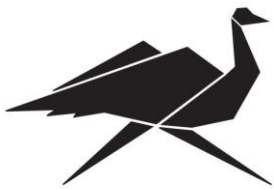




OLD MAN EMU FITTING INSTRUCTIONS

TABLE 1: CLIP LINER LENGTHS

Vehicle	Spring No.	U-Clip insert length (mm)	Quantity
Hilux 2005	EL043R	60	4
		50	2
	EL044R	60	4
		50	2
	EL045R	60	4
		50	2
	EL071R	70	4
		50	2
Hilux 2015 on	EL089R	50	4
		70	2
	EL090R	60	4
		70	2
	EL091R	80	4
		70	2
Ranger 2006 on	EL049R	60	4
	EL068R	60	4
	EL069R	80	4
DMAX/ Colorado	EL072R	50	2
		80	2
	EL073R	50	4
		80	2
	EL074R	70	4
		100	2
Navara D23	EL083R	70	4
		90	2
	EL084R	80	4
		100	2
	EL085R	80	4
		100	2
	EL092R	70	4
		90	2
	EL093R	90	4
		100	2
	EL094R	90	4
		100	2



OLD MAN EMU FITTING INSTRUCTIONS

Vehicle	Spring No.	U-Clip insert length (mm)	Quantity
Triton MY15	EL086R	60	4
		100	2
	EL087R	60	4
		100	2
	EL088R	70	4
		100	2
79 series	EL066R	88	4
		108	2
	EL079R	70	4
		100	2
	EL080R	70	4
		100	2
EL081R	70	4	
	100	2	
EL082R	100	6	
F-250 2008 on	EL077R	70	4
UAZ	EL078R	70	4